

## Case Study: US Healthcare Providers Utilize Telehealth in Response to COVID-19

### Proactive use of telehealth during the COVID-19 pandemic to identify high-risk patients and improve patient engagement

#### Highlights

As the severity of the COVID-19 crisis became apparent, PCP1st, a Florida-based provider of specialized care for high-risk patients and those in need of complex care management, partnered with Wanda Health.

- PCP1st adopted the Wanda Health integrated telehealth platform and deployed COVID-19 Screening and Remote Care Management programs to 3,000 patients.
- The results demonstrated that the proactive use of real-time telehealth and remote monitoring dramatically improved patient engagement and delivered new revenue while identifying high-risk patients that needed ongoing specialized care.
- PCP1st continues to successfully transition high-risk patients and those with complex care needs to remote patient monitoring and telehealth interventions improving care plan adherence, reducing unplanned rehospitalizations, and increasing revenue.

#### The Challenge

The onset of the COVID-19 crisis has presented several new challenges for healthcare providers including:

- Patients, especially those at high risk with pre-existing conditions, are reluctant to visit doctors' offices, clinics, or hospitals fearing increased risk of infection of COVID-19
- Growing need to facilitate remote working for clinical staff and healthcare workers when self-isolating, to maintain high standards of care
- Desire to offset rapidly declining revenue at healthcare providers including doctors' offices, clinics, and hospitals through reimbursement for telehealth visits
- Educating patients on the proper identification of symptoms and supporting their information needs while they are self-isolating

#### The Solution

PCP1st deployed the COVID-19 Telehealth programs from Wanda Health, providing patients and quarantined individuals with automated remote symptom screening and remote care management for symptomatic and COVID-19 positive patients.

- Used a "rapid deployment" process going live in 12 days
- Patients sent automated COVID-19 Daily Health Checks via telehealth
- Doctors and care team received real time Alerts of symptomatic patients
- Doctors, staff, and patients interacted via embedded video and voice conferencing
- The programs are designed to support reimbursement requirements for COVID-19
- Doctors, staff, and patients interacted via the embedded video and voice conferencing
- Data collection followed symptom guidance from the Centers for Disease Control and Prevention

#### Results:

**3,000**  
Active Patients

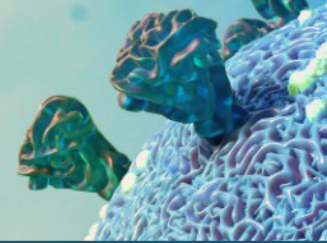
**82%**  
Patient Satisfaction

**780**  
Billable Encounters

**14%**  
COVID-19 Symptomatic

**56%**  
Needed Assistance

**2,460**  
COVID-19 Screenings  
Completed



## Case Study: US Healthcare Providers Utilize Telehealth in Response to COVID-19

### The Learnings

The results indicate that proactive use of the Wanda Health COVID-19 Telehealth solution by PCP1st produced substantial benefits. The data and analytics helped to improve workflow efficiency that optimized care and generated new revenue. The ease of use of the platform allowed the PCP1st team and their patients to rapidly become proficient using telehealth-enabled care. Key insights included:

- Strengthened the patient-provider relationship
- Successfully identified at risk patients
- New telehealth revenue generated
- Improved team productivity
- Reduced exposure to disease for patients and care team

### Patient Engagement

- 14% of patients were symptomatic for COVID-19
- 20% of patients needed medication assistance
- 82% of patients satisfied with program overall
- 100% satisfaction among patients requesting a call back
- 87% satisfaction in patients needing medication assistance

### New Revenue Generation

- 780 billable telehealth encounters completed
- 32% increase in billable telehealth encounters
- 980 unique patients received telehealth encounter

### Productivity

- 25% increase telehealth visits completed/team member
- 22% increase in the unique patients cared for

### Conclusions

The success attained by PCP1st using the COVID-19 Telehealth programs by Wanda Health demonstrates a major inflection in how healthcare is being delivered in a clinically and commercially sustainable approach during the pandemic and beyond.

The addition of telehealth and remote monitoring to the care protocols for high-risk patients increases patient engagement while simultaneously improving operational productivity and generating new revenue for the provider.

The workflow integration of telehealth used by PCP1st, enabled by the Wanda Health platform, is helping the provider to more effectively support an ever-broadening range of diseases and conditions including COVID-19, seasonal influenza, chronic diseases, and mental and behavioral health conditions.

### Participants

#### PCP1st



PCP1st, located in southern Florida, provides customized care for high risk patients and those that require complex care management. As experts in chronic care management along with the use of telehealth and remote patient monitoring PCP1st delivers proactive care which is shown to reduce cost, generate new income while improving patient and provider satisfaction. [www.pcp1st.com](http://www.pcp1st.com)

#### Wanda Health

Our leading telehealth platform combines predictive analytics, advanced behavioral sciences, patient engagement and multimodal telehealth into a clinical decision support and care management platform that reduces adverse events and improves adherence. Our customers are experiencing reductions in unplanned rehospitalizations and emergency department visits, increased patient adherence, added revenue and reduced costs of operations.

*“The COVID-19 Telehealth and chronic care programs unique to Wanda Health, allow us to more rapidly identify and prevent the spread of the virus. It also is helping us to safely care for high-risk patients keeping them healthier at home.”*

*Yeeny Gonzalez, DNP, MD, CEO PCP1st*

